

## • 60mm busbar system and components



**New!**

### Convincing advantages

- ✦ Wide range of application
- ✦ Small number of system components
- ✦ No customized components demand
- ✦ High flexibility
- ✦ Innovative and sophisticated solutions
- ✦ Easy to fit
- ✦ According to standards IEC 60439-1, VDE 0660 part 500

### Applications

- ✦ Industry and energetics
- ✦ Main and Sub-distribution boards
- ✦ Cable and Wire protection
- ✦ Motor protection

**Available Now!**

**ETI Elektroelement d.d.**

Obrezija 5, SI - 1411 Izlake  
Slovenija

Tel. + 386 03 56 57 570

Faks + 386 03 56 74 077

eti@eti.si

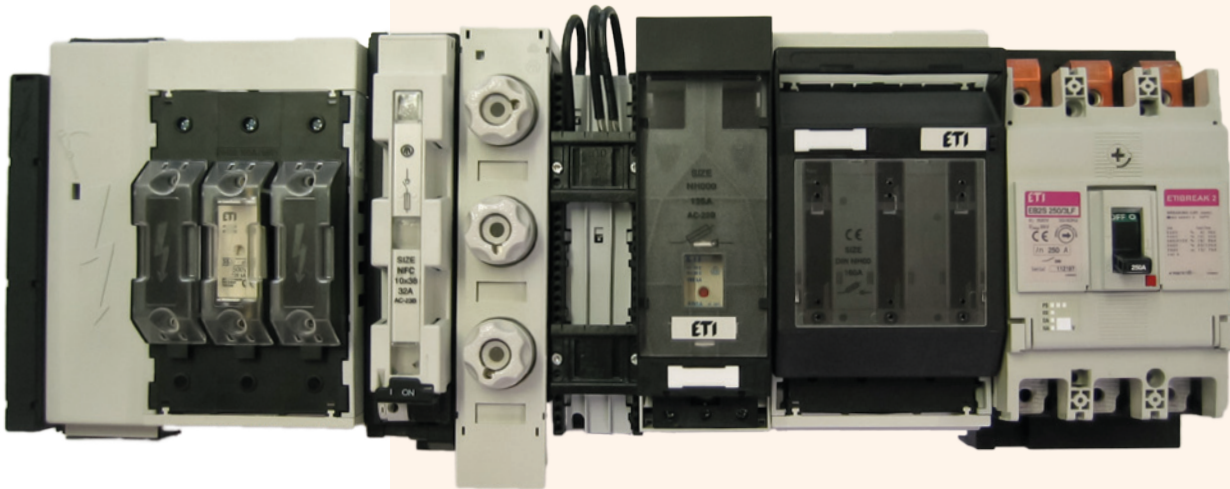
## 60 mm busbar system

### Description

With busbar system (Busbar) can be achieved faster assembly and connecting electrical components and higher density of electrical components per unit area. In this way saves time, which is required for assembly and also saving the space required for installation. The main feature of the busbar system is that all components are installed on the busbars, which provide solidness to the components while installing the components in place already provide junction inlet electrical connections. For complete wiring of electrical components is to be performed only wiring branches to consumers. Busbar system is simple in case of need for subsequent extension because the only condition is to extend the copper busbars. ETI's busbar system offers a wide range of items for direct mounting on busbar system, the offer also includes special adapters through which they can connect to other components, which shall be affixed to the mounting plate.

### Fields of use and features

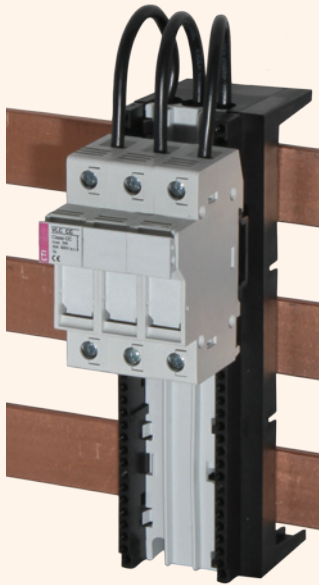
Busbar systems are used wherever we want to achieve high visibility and compact inside electrical cabinets without undue additional wiring. Busbar system can be used in cases of alteration or extension of existing electrical cabinets because the more compact system saves space, or the only way to ensure enough. As a rule, the busbar systems are used in industrial environments, where the structure of electrical cabinets made by functional block and where it should be ensured high visibility electrical components for ease and speed of servicing in the event of failures and downtime.



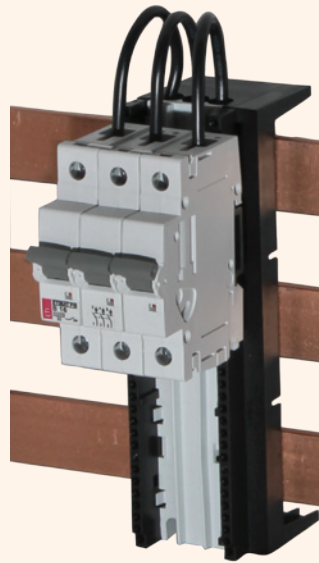
### ETI 60mm busbar system offers:

- Short installation time
- Less wiring
- Standardized dimensions
- Easy to install
- Flexibility

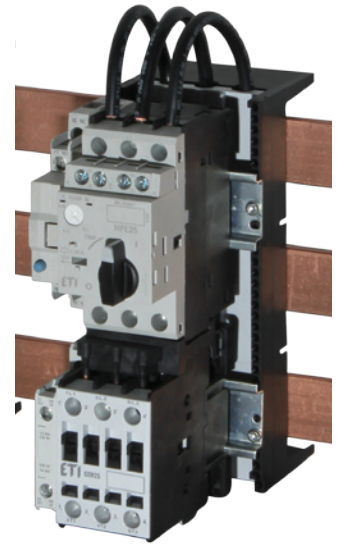
Examples:



1x DA-60/32/54/1  
1x VLC 10, 3-pole



1x DA-60/32/54/1  
1x ETIMAT P10, 32A



1x DA-60/32/72/2  
1x MPE 25 + UVT + ECCMPE25  
1x CEM 25 + BXCMLC

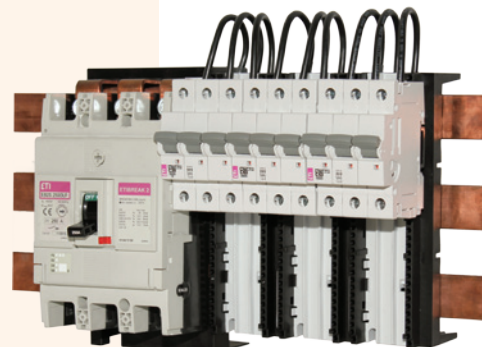
Example 1

Type	Code No.	Number of Components [pcs]
DVL-60/183	001696050	2
CHVL-60/183	001696152	2
DA-60/250/3/FE-5	001696162	1
EB2S 250/3LF 250A 3p	004671813	1



Example 2

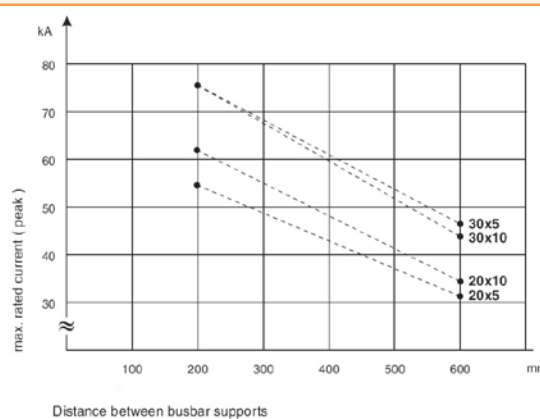
Type	Code No.	Number of Components [pcs]
DA-60/32/54/1	001696081	3
ETIMAT P10, C 32A, 3p	273231109	3
DA-60/250/3/FE-5	001696162	1
EB2S 250/3LF 250A 3p	004671813	1



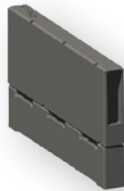
**Supports and connections (60mm busbar)**

Type	Code No.	Description	Packaging [pcs]
BBS-60/1	001696000	1-pole busbar support for busbars 5-10mm and 20mm or 30mm width	10
BBS-60/3	001696001	3-pole busbar support for busbars 5-10mm and 20mm or 30mm width	10
BBS-60/4	001696002	4-pole busbar support for busbars 5-10mm and 20mm or 30mm width	10
BBS-60/3-A25	001696003	3-pole busbar support for busbars 5-10mm and 20mm or 30mm width with 25mm <sup>2</sup> terminals	5
BBS-60/3-A16	001696004	3-pole busbar support for busbars 5-10mm and 20mm or 30mm width with 16mm <sup>2</sup> terminals	5
H5-BBS	001696005	Insertion for busbar height compensation, 5mm	100
L-BBS-60/3	001696006	Lateral cover for busbar holder, 3p	10
L-BBS-60/4	001696007	Lateral cover for busbar holder, 4p	10
S-BBS-60/3	001696008	Side cover for busbar holder (BBS-60/3-A), 3p	10
BBC-60/3	001696009	Busbar cover (3-pole), covering range 27-50mm/piece	50
BBC-60/4	001696010	Busbar cover (4-pole), covering range 27-50mm/piece	50
BBC-1/20	001696011	Busbar cover (1-pole) for single busbar 5-10mm thick and 20mm wide, length 1m	20
BBC-1/30	001696012	Busbar cover (1-pole) for single busbar 5-10mm thick and 30mm wide, length 1m	20
CM-60/250/3	001696013	Connecting module 250A, 3-pole, terminal 1,5 - 70mm <sup>2</sup> connection	1
CM-60/250/4	001696014	Connecting module 250A, 4-pole, terminal 1,5 - 70mm <sup>2</sup> connection	1
CM-60/250/3/120-5	001696015	Connecting module 250A, 3-pole, terminal 16 - 120mm <sup>2</sup> connection using Cu cable or flat Cu busbar 5mm	1
CM-60/250/3/120-10	001696016	Connecting module 250A, 3-pole, terminal 16 - 120mm <sup>2</sup> connection using Cu cable or flat Cu busbar 10mm	1
CM-60/630/3	001696017	Connecting module 630A, 3-pole, terminal 70 - 300mm <sup>2</sup> connection	1
CM-60/630/F/3	001696018	Connecting module 630A, 3-pole, terminal clamping range 11x21mm using flat Cu busbar	1
CT-5/16	001696019	Conductor terminal with clamping range 1,5-16mm <sup>2</sup> for busbar thickness 5mm	50
CT-5/35	001696020	Conductor terminal with clamping range 1,5-35mm <sup>2</sup> for busbar thickness 5mm	15
CT-5/50	001696021	Conductor terminal with clamping range 1,5-50mm <sup>2</sup> for busbar thickness 5mm	15
CT-5/70	001696022	Conductor terminal with clamping range 16-70mm <sup>2</sup> for busbar thickness 5mm	15
CT-5/120	001696023	Conductor terminal with clamping range 16-120mm <sup>2</sup> for busbar thickness 5mm	15
CT-5/185	001696024	Conductor terminal with clamping range 16-185mm <sup>2</sup> for busbar thickness 5mm	15
CT-10/16	001696025	Conductor terminal with clamping range 1,5-16mm <sup>2</sup> for busbar thickness 10mm	50
CT-10/35	001696026	Conductor terminal with clamping range 1,5-35mm <sup>2</sup> for busbar thickness 10mm	15
CT-10/50	001696027	Conductor terminal with clamping range 1,5-50mm <sup>2</sup> for busbar thickness 10mm	15
CT-10/70	001696028	Conductor terminal with clamping range 16-70mm <sup>2</sup> for busbar thickness 10mm	15
CT-10/120	001696029	Conductor terminal with clamping range 16-120mm <sup>2</sup> for busbar thickness 10mm	15
CT-10/185	001696030	Conductor terminal with clamping range 16-185mm <sup>2</sup> for busbar thickness 10mm	15
PT-30/34x10	001696031	Plate terminal for busbars up to 30mm width, clamping range 34x34x10mm	3
PT-40/34x10	001696150	Plate terminal for busbars up to 40mm width, clamping range 34x34x10mm	3
PT-50/34x10	001696151	Plate terminal for busbars up to 50mm width, clamping range 34x34x10mm	3
BBCH-60/144	001696032	Universal cover of 3-pole busbars 5-10mm, covering width 144mm (ex. cover for conductor terminals type CT-...)	1
BBCH-60/84	001696033	Universal cover of 3-pole busbars 5-10mm, covering width 84mm (ex. cover for conductor terminals type CT-...)	1
BC-20x5-30x10	001696034	Busbar connector for range 20x5mm - 30x10mm	3

BBS-60/... can be adjusted to 20m or 30mm busbar width and 5-10 mm thickness.



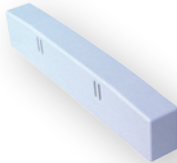
BBS-60/3



BBS-60/3-A25



H5-BBS



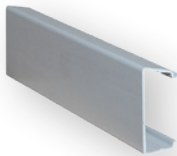
L-BBS



S-BBS-60/3



BBC-60/3



BBC-1/30



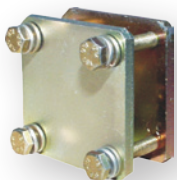
CM-60/250



CM-60/630



CT-5, 10/...



PT-30/34x10



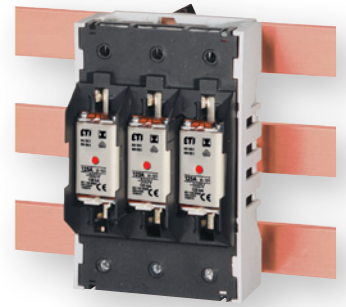
BBCH-60/144



BC-20x5-30x10

NH fuse-switch disconnectors and fuse bases for 60mm busbar			
Type	Code No.	Description	Packaging [pcs]
PTV-B 00 3p M8	001696035	NH fuse-base size 00, 3-pole, 5-10mm busbars, fuse-link protection cover, connection top or bottom, M8 connection	1
PTV-B 00 3p F57	001696036	NH fuse-base size 00, 3-pole, 5-10mm busbars, fuse-link protection cover, connection top or bottom, F57 connection	1
PTV-B 1 3p M10 BOTTOM	001696037	NH fuse-base size 1, 3p, 5-10mm busbars, connection BOTTOM	1
PTV-B 1 3p M10 TOP	001696038	NH fuse-base size 1, 3p, 5-10mm busbars, connection TOP	1
PTV-B 2 3p M10 BOTTOM	001696039	NH fuse-base size 2, 3p, 5-10mm busbars, connection BOTTOM	1
PTV-B 2 3p M10 TOP	001696040	NH fuse-base size 2, 3p, 5-10mm busbars, connection TOP	1
HVL-B 000 3p F57-5 Slim	001696041	NH fuse-switch disconnector size 000, 3-pole, 5-10mm busbars, connection BOTTOM, slim line	1
HVL-B 00 3p M8	001696042	NH fuse-switch disconnector size 00, 3-pole, 5-10mm busbars, connection top/bottom, M8 connection	1
HVL-B 00 3p F57	001696043	NH fuse-switch disconnector size 00, 3-pole, 5-10mm busbars, connection top/bottom, F57 connection	1
HVL-B 1 3p M10 TOP	001696044	NH fuse-switch disconnector size 1, 3-pole, 5-10mm busbars, connection TOP	1
HVL-B 1 3p M10 BOTTOM	001696045	NH fuse-switch disconnector size 1, 3-pole, 5-10mm busbars, connection BOTTOM	1
HVL-B 2 3p M10 TOP	001696046	NH fuse-switch disconnector size 2, 3-pole, 5-10mm busbars, connection TOP	1
HVL-B 2 3p M10 BOTTOM	001696047	NH fuse-switch disconnector size 2, 3-pole, 5-10mm busbars, connection BOTTOM	1
HVL-B 3 3p M10 TOP	001696048	NH fuse-switch disconnector size 3, 3-pole, 5-10mm busbars, connection TOP	1
HVL-B 3 3p M10 BOTTOM	001696049	NH fuse-switch disconnector size 3, 3-pole, 5-10mm busbars, connection BOTTOM	1

\* in fuse-switch disconnector HVL-B 000 can be used only fuses size 000 (00C)  
 \*\* protection covers are in the table of accessories  
 \*\*\* connecting from top/bottom (read installation manual carefully to avoid wrong connection!)



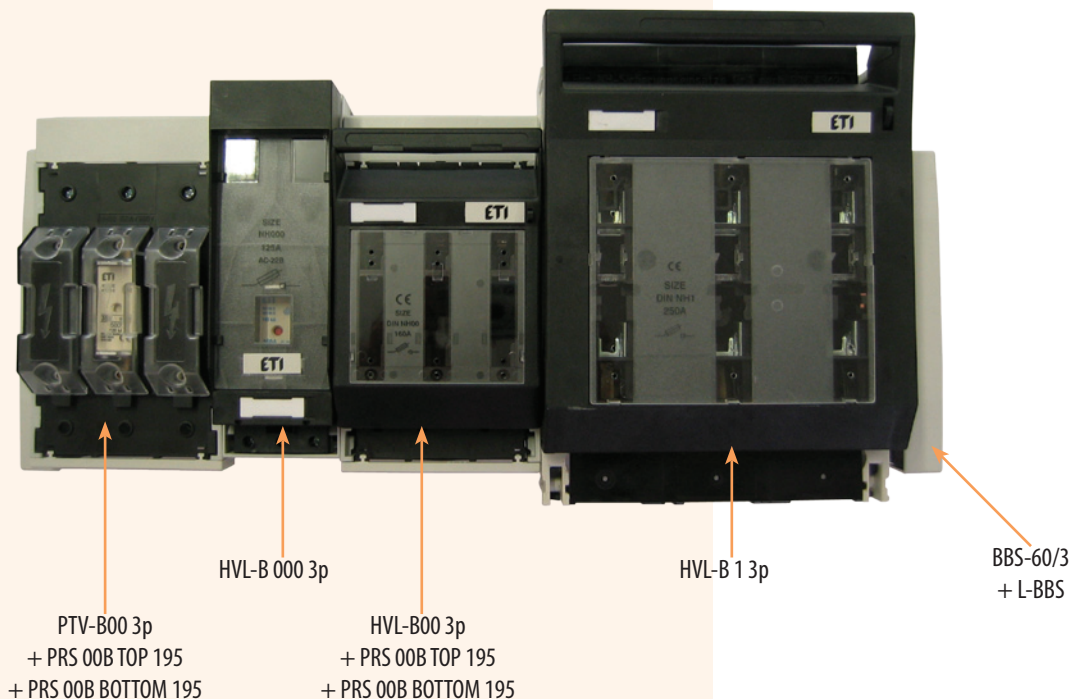
PTV-B 00 ...



HVL-B 000 ...



HVL-B 00 ...

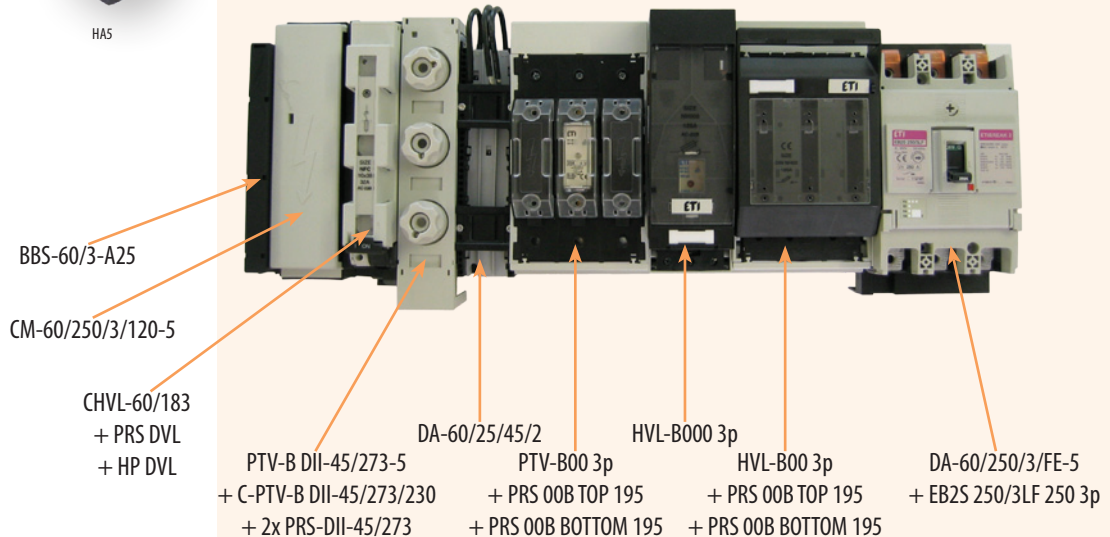




**D fuse-switch disconnector and fuse bases for 60mm busbar**

Type	Code No.	Description	Packaging [pcs]
DVL-60/183 CHVL-60/183	001696050	Fuse-switch disconnector for fuses D02	1
PTV-B ...	001696152	CH-type fuse-switch disconnector	1
C-PTV-B ... /195	001696051	D02-type-fuse-bases 3-pole for adapter sleeve, width 27mm	10
	001696052	DII-type-fuse-bases 3-pole for adapter sleeve, width 45mm	1
	001696053	DIII-type-fuse-bases 3-pole for adapter sleeve, width 54mm	10
	001696054	DII type-fuse-bases 3-pole for fitting screw, width 45mm	10
	001696055	DII type-fuse-bases 3-pole for fitting screw, width 54mm	10
	001696056	Protection cover width 27mm, height 195mm	10
	001696057	Protection cover width 36mm, height 195mm	10
	001696058	Protection cover width 45mm, height 195mm	10
	001696059	Protection cover width 54mm, height 195mm	10
	001696060	Protection cover width 27mm, height 230mm	10
	001696061	Protection cover width 36mm, height 230mm	10
	001696062	Protection cover width 45mm, height 230mm	10
	001696063	Protection cover width 54mm, height 230mm	10
	001696064	Side protection cover width 195 (for C-PTV-B ... /195)	1
	001696065	Side protection cover width 230 (za C-PTV-B ... /230)	10
	001696066	Protection cover	15
	001696067	Protection cover for DVL and CHVL, TOP/BOTTOM	2
	001696068	Reach-through protection, face top and bottom, 27mm width	20
	001696069	Reach-through protection, face top and bottom, 36mm width	20
	001696070	Reach-through protection, face top and bottom, 45mm width	10
	001696071	Reach-through protection, face top and bottom, 54mm width	10
	001696072	Overreaching protection, face top and bottom, 27mm width	20
	001696073	Overreaching protection, face top and bottom, 36mm width	20
	001696074	Overreaching protection, face top and bottom, 45mm width	10
	001696075	Overreaching protection, face top and bottom, 54mm width	10
	001696076	Reach-through protection lateral right and left	20
	001696077	D-strips spacer module	10
HAS	001696111	Compensation piece for busbar thickness (to adapt busbar components to fit 10mm or 5mm busbar thickness)	100

\*HAS is compensation piece which is intent to use for adaptation for example fuse-bases or fuse-switch disconnector from 10mm busbar thickness to 5mm busbar thickness. Each phase pole needs one compensation piece.  
\*\* more information available in technical part of the catalogue



## NV disconnectors with fuses

### Device adapters for 60 mm busbar

Type	Code No.	Description	Packaging [pcs]
DA-60/25/45/1	001696080	Device adapter with 1 mounting rail, 3-pole, 45mm width, 25A	1
DA-60/32/54/1	001696081	Device adapter with 1 mounting rail, 3-pole, 54mm width, 32A	1
DA-60/32/63/1	001696082	Device adapter with 1 mounting rail, 3-pole, 63mm width, 32A	1
DA-60/32/72/1	001696083	Device adapter with 1 mounting rail, 3-pole, 72mm width, 32A	1
DA-60/63/54/1	001696084	Device adapter with 1 mounting rail, 3-pole, 54mm width, 63A	1
DA-60/63/63/1	001696085	Device adapter with 1 mounting rail, 3-pole, 63mm width, 63A	1
DA-60/63/72/1	001696086	Device adapter with 1 mounting rail, 3-pole, 72mm width, 63A	1
DA-60/25/45/2	001696087	Device adapter with 2 mounting rails, 3-pole, 45mm width, 25A	1
DA-60/32/108/2	001696088	Device adapter with 2 mounting rails, 3-pole, 108mm width, 32A	1
DA-60/32/54/2	001696089	Device adapter with 2 mounting rails, 3-pole, 54mm width, 32A	1
DA-60/32/72/2	001696090	Device adapter with 2 mounting rails, 3-pole, 72mm width, 32A	1
DA-60/32/81/2	001696091	Device adapter with 2 mounting rails, 3-pole, 81mm width, 32A	1
DA-60/63/108/2	001696092	Device adapter with 2 mounting rails, 3-pole, 108mm width, 32A	1
DA-60/63/54/2	001696093	Device adapter with 2 mounting rails, 3-pole, 54mm width, 63A	1
DA-60/63/81/2	001696094	Device adapter with 2 mounting rails, 3-pole, 81mm width, 63A	1
MR-DA/45/7,5	001696098	Mounting rail for adapter 45mm width, 35mm rail	10
MR-DA/54/7,5	001696099	Mounting rail for adapter 54mm width, 35mm rail	10
MR-DA/63/7,5	001696100	Mounting rail for adapter 63mm width, 35mm rail	10
MR-DA/72/7,5	001696101	Mounting rail for adapter 72mm width, 35mm rail	10
MR-DA/81/7,5	001696102	Mounting rail for adapter 81mm width, 35mm rail	10
MR-DA/90/7,5	001696103	Mounting rail for adapter 90mm width, 35mm rail	10
CP-DA	001696104	Connecting piece	100
WC-DA	001696105	Width compensation (9mm)	10
AMR-DA/45	001696109	Adapter module 45mm width (segment to lengthen adapter)	1
AMR-DA/54	001696110	Adapter module 54mm width (segment to lengthen adapter)	1
HA5	001696111	Compensation piece for busbar thickness (to adapt busbar components to fit 10mm or 5mm busbar thickness)	100
DA-60/250/3/FE-5	001696162	Adapter for MCCB - for ETIBREAK EB2 250 and EB2S 250	1
DA-60/250/4/FE-5	001696163	Adapter for MCCB - for ETIBREAK EB2 250 and EB2S 250	1

### Accessories for 60mm busbar system

Type	Code No.	Description	Packaging [pcs]
PRS 00 MB 1p	001696120	Protective cover, 1-pole, size 00, top/bottom	1
PRS 1 MB 1p	001696121	Protective cover, 1-pole, size 1, top/bottom	1
PRS 3 MB 1p	001696122	Protective cover, 1-pole, size 3, top/bottom	1
PRS 00 B TOP 195	001696123	Protective cover, 3-pole, size 00, TOP, short (bottom to top length 195mm)	1
PRS 00 B BOTTOM 195	001696124	Protective cover, 3-pole, size 00, BOTTOM, short (bottom to top length 195mm)	1
PRS 00 B TOP 230	001696125	Protective cover, 3-pole, size 00, TOP, wide (bottom to top length 230mm)	1
PRS 00 B BOTTOM 230	001696126	Protective cover, 3-pole, size 00, BOTTOM, wide (bottom to top length 230mm)	1
PRS 1 B TOP	001696127	Protective cover, 3-pole, size 1, TOP	1
PRS 1 B BOTTOM	001696128	Protective cover, 3-pole, size 1, BOTTOM	1
PRS 2 B TOP	001696129	Protective cover, 3-pole, size 2, TOP	1
PRS 2 B BOTTOM	001696130	Protective cover, 3-pole, size 2, BOTTOM	1
H-PTV-B 00	001696131	Protection cover for fuse in fuse base PTV-B 00	3

\* protection covers PRS 00 B TOP/BOTTOM 230 / 195 correspond to PTV-B 00 and HVL-B 00

\*\* protection covers for fuse bases type PTV-B 1,2 are PRS 1,2 B TOP/BOTTOM





SP HVL ...



SP HVL ... P1



SP HVL ... P2



K-HVL00-3/H  
K-HVL1-3/H  
K-HVL2-3/H  
K-HVL3-3/H



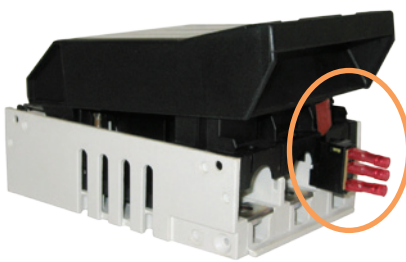
MST 00 1p+3p  
MST 1-3 1p  
MST 1-3 3p



EFM HVL ...

**Accessories for HVL**

Type	Code No.	Description	Packaging [pcs]
SP HVL00	001692701	Clip terminal, 1,5 – 50 mm <sup>2</sup> Cu	3
SP HVL1	001692702	Clip terminal, 25– 150 mm <sup>2</sup> Cu	3
SP HVL2	001692703	Clip terminal, 25– 240 mm <sup>2</sup> Cu	3
SP HVL3	001692704	Clip terminal, 11x21 mm <sup>2</sup> Cu	3
SP HVL00 P1	001692760	Prism clamp, 10 – 70 mm <sup>2</sup> Al/Cu	3
SP HVL1 P1	001692761	Prism clamp, 70 – 150 mm <sup>2</sup> Al/Cu	3
SP HVL2 P1	001692762	Prism clamp, 120 – 240 mm <sup>2</sup> Al/Cu	3
SP HVL3 P1	001692763	Prism clamp, 120 – 300 mm <sup>2</sup> Al/Cu	3
SP HVL1 P2	001692764	Prism clamp for 2-conductors connection, 2x70 – 95 mm <sup>2</sup> Al/Cu	3
SP HVL2 P2	001692765	Prism clamp for 2-conductors connection, 2x120 – 150 mm <sup>2</sup> Al/Cu	3
SP HVL3 P2	001692766	Prism clamp for 2-conductors connection, 2x120 – 240 mm <sup>2</sup> Al/Cu	3
MST 00 1p+3p	001692711	Switch position indicator for fuse switch disconnector size 00, 1p/3p	1
MST 1-3 1p	001692712	Switch position indicator for fuse switch disconnector size 1-3, 1p	1
MST 1-3 3p	001692713	Switch position indicator for fuse switch disconnector size 1-3, 3p	1
K-HVL00-3/H	001692708	Mechanical fuse monitor, size 00, 3p	1
K-HVL1-3/H	001692715	Mechanical fuse monitor, size 1, 3p	1
K-HVL2-3/H	001692716	Mechanical fuse monitor, size 2, 3p	1
K-HVL3-3/H	001692717	Mechanical fuse monitor, size 3, 3p	1
EFM HVL00	001692732	Electronic fuse monitoring unit, 3-pole	1
EFM HVL1	001692733	Electronic fuse monitoring unit, 3-pole	1
EFM HVL2	001692734	Electronic fuse monitoring unit, 3-pole	1
EFM HVL3	001692735	Electronic fuse monitoring unit, 3-pole	1



MST 00 1p+3p switch position indicator



K-HVL00-3/H mechanical fuse monitor  
(in combination with pin striker fuses)



HVL-B00 3p  
+ MST 00 1p+3p  
+ K-HVL00-3/H

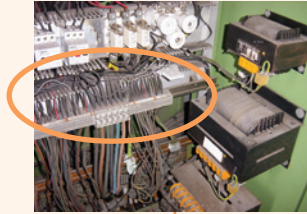


## Benefits using ETI busbar 60mm

Poor visibility of connections without orderliness links.



Reduced number of connections (less power supply terminals)



Low integration of elements



Implementation with the busbar system provides several benefits

